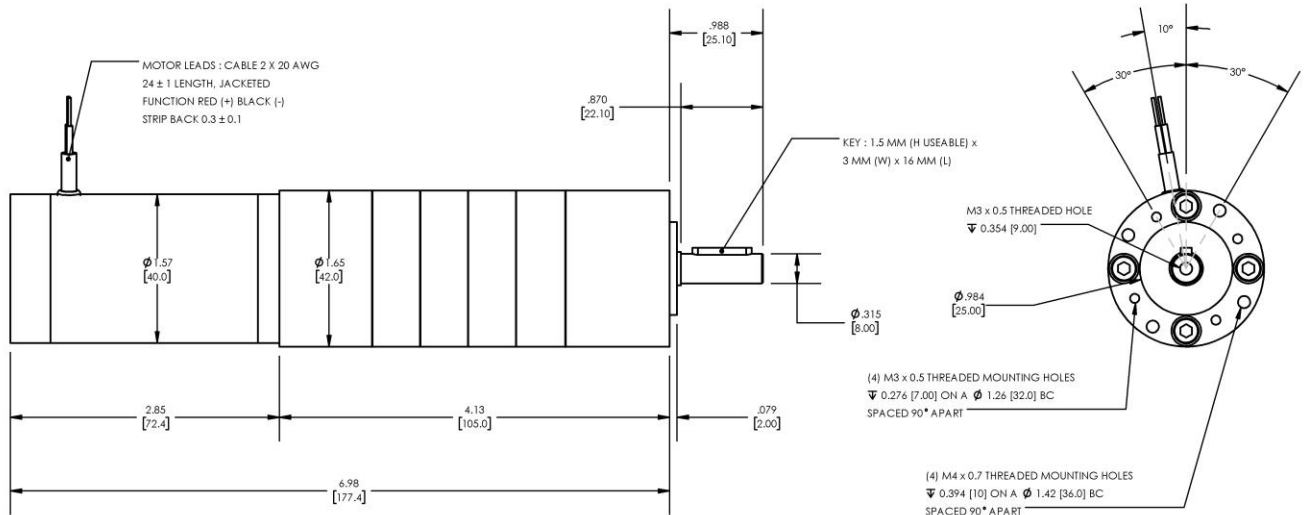


**Model Number:****MMP TM40-285D-36V GP42-1140**

DIMENSIONS ARE INCHES [MM] UNLESS OTHERWISE STATED

PLANETARY GEARMOTOR OUTPUT PARAMETERS:	VALUE	UNITS	TOLERANCE
Gearhead Ratio (exact)	1139.73 : 1		
Gearhead Shaft Output Speed (at full-load)	4.7	RPM	MAX
Gearmotor Rated Continuous Torque	259	In-Lbs	MAX
Gearmotor Rated Peak Torque	266++	In-Lbs	----
Gearhead Standard Backlash	63	Arc Minutes	MAX
Gearhead Efficiency	65%	----	----
Output Shaft Radial Load Capacity	68	Lbs	MAX
Output Shaft Axial Load Capacity	25	Lbs	MAX
Gearmotor Total Weight	2.2	Lbs	MAX

++ All Peak Torque values are dependent upon duty. Contact our sales office for details.

DC MOTOR PERFORMANCE PARAMETERS:	VALUE	UNITS	TOLERANCE
Rated DC Voltage	36	DC VOLTS	----
Rated Continuous Current	1.00	AMPERES	----
No-Load Speed	7200	RPM	MAX
Rated Speed	5357	RPM	+/- 15%
Rated Continuous Power Out	22	WATTS	+/- 15%
Rated Continuous Torque	5.6	OZ-IN	----
Peak Torque (motor only)	18	OZ-IN	----
No-Load Current	0.18	AMPERES	MAX
Back EMF Constant (Ke)	5.0	V/KRPM	+/- 10%
Torque Constant (Kt)	6.8	OZ-IN/AMP	+/- 10%
DC Armature Resistance	9.24	OHMS	+/- 15%
Armature Inductance	3.90	mH	+/- 15%
Armature temperature	155	DEG. C	MAX

NOTES:

- ENCODER & BRAKE OPTIONS AVAILABLE – [FOLLOW THIS LINK FOR DETAILS](#)
- NEMA MOUNTING FLANGE OPTION AVAILABLE – [FOLLOW THIS LINK FOR DETAILS](#)

MIDWEST MOTION PRODUCTS, INC**DESIGN, MANUFACTURING & DISTRIBUTION - MOTION CONTROL EQUIPMENT**www.midwestmotion.comemail: sales@midwestmotion.com